

2022 Oakville Yacht Squadron Annual Regatta

AWESOME RACING • LIVE MUSIC • AMAZING PARTY



Oakville Yacht Squadron

97 Forsythe Street
Oakville, ON
905-338-9379



Sailing Instructions Lighthouse Cruisers Challenge Trophy August 13th, 2022

1 Rules

- 1.1 The Event will be governed by the rules as defined in *The Racing Rules of Sailing*.
- 1.2 If there is a conflict between the Notice of Race (NOR) and the Sailing Instructions (SIs), the SIs will take precedence.

2 Notices to Competitors

- 2.1 Notices to competitors will be posted on the Official Notice Boards at OYS.

3 Changes to Sailing Instructions

- 3.1 Any change in the sailing instructions will be posted on the Sailing Notice Boards before 1045h on the day it will take effect, except that any change in the schedule of races will be posted by 0900h on the day it is to take effect.

4 Signals Made Ashore

- 4.1 Signals made ashore will be displayed from the OYS flag pole.
- 4.2 Code flag 'AP', Answering Pennant, with two sound signals means the race is postponed for no less than 30 minutes. The warning signal for the first start will not be made less than 30 minutes after 'AP' is lowered.

5 Schedule

Event	Time	Location
Briefing	1045h, August 13, 2022	Patio Main Clubhouse
First Warning	1130h, August 13, 2022	See Course Diagram
Awards	Following Dinner, August 13, 2022	Patio Main Clubhouse

6 Class Flags, Division and Fleet

- 6.1 All Lighthouse Cruisers Challenge boats are in the same fleet.
- 6.2 Boats are encouraged to display the Ensign of their choosing.

7 Courses

- 7.1 The Lighthouse Cruisers Challenge will be a Middle Distance event of approximately 15-20nm.
- 7.2 The Course is to be sailed and/or motored per the discretion of participants.
- 7.3 The Course to be sailed and/or motored shall be announced at the Competitors' Briefing.
- 7.4 The diagrams in Addendum A show the course options.

8 Marks

- 8.1 The Marks to be used are in the table below.

Mark	Description	Coordinates
OYS Mark 1	Yellow Barrel w/ #1	43° 25.842'N 079° 39.728'W
Finish Mark East	Yellow Water Intake Mark East	43° 25.909'N 079° 39.846'W
Fogh Offshore Mark	Short White Cylinder	43° 30.643'N 079 33.654'W
Shell Pier Buoy	[need description] White Spar	43° 22.120'N 079 42.370'W
OYS Virtual Mark Long	Virtual Mark ~5nm from OYS Mark 1 on Bearing 133°	43° 23.261'N 079° 33.915'W

- 8.2 If a mark is missing or adrift boats shall round the coordinates of the mark.

9 The Start

- 9.1 The starting line is between OYS Mark 1 and Finish Mark East.
- 9.2 Boats shall start at 1135h.
- 9.3 There will be no Signal Boat or Starting Sequence.

10 Change to the Next Leg of the Course

- 10.1 The Course will not be changed.

11 The Finish

- 11.1 The finish line is between OYS Mark 1 and Finish Mark East.
- 11.2 Boats shall record their own finish time manually.

12 Time Limits & Propulsion

- 12.1 There is no Mark 1 Time Limit.
- 12.2 The Race Time Limit is 1630h.
- 12.3 If no boat has finished within the Race Time Limit the race is abandoned.
- 12.4 Boats may use propulsion other than sails when required.

13 Protest and Requests for Redress

- 13.1 Competitors may not request redress for any reason other than vanity.

14 Scoring

- 14.1 Boats will be scored based on criteria to be announced at the Briefing.

15 Safety Regulations

- 15.1 A boat which retires from a race shall inform the Race Committee either directly or by radio (VHF channel 72). Failure to do so may result in disqualification from the race.

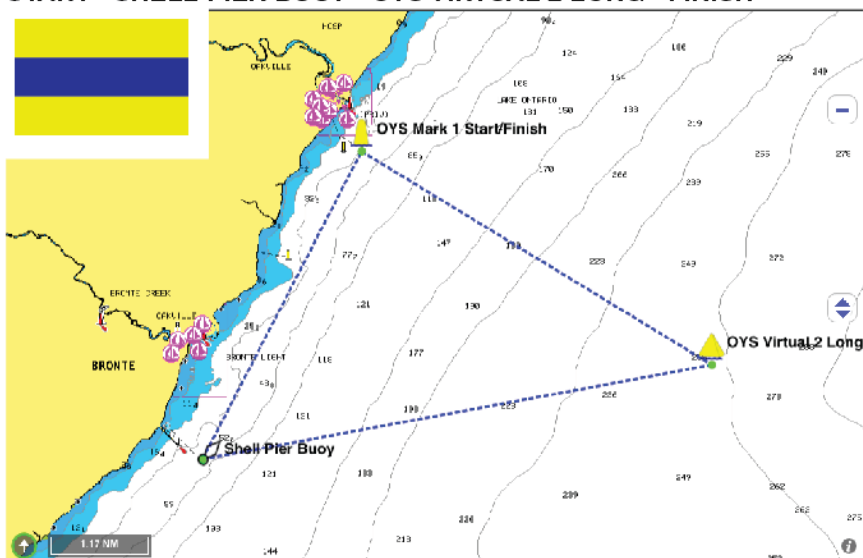
16 Disclaimer of Liability

- 16.1 Competitors participate in the race entirely at their own risk. See RRS Rule 4, Decision to Race. The organizing authority will not accept any liability for material damage or personal injury, or death sustained in conjunction with or prior to, during, or after the race.

ADDENDUM A - ILLUSTRATING THE COURSE

NOTE: BASED ON CONDITIONS THE RACE COMMITTEE MAY ASSIGN A DIFFERENT COURSE AT THE COMPETITORS' BRIEFING.

LIGHTHOUSE CHALLENGE COURSE DELTA - TO PORT - 15.4nm START - SHELL PIER BUOY - OYS VIRTUAL 2 LONG - FINISH



LIGHTHOUSE CHALLENGE COURSE ECHO - TO PORT - 18.9nm START - OYS VIRTUAL 2 LONG - FOGH OFFSHORE MARK - FINISH

