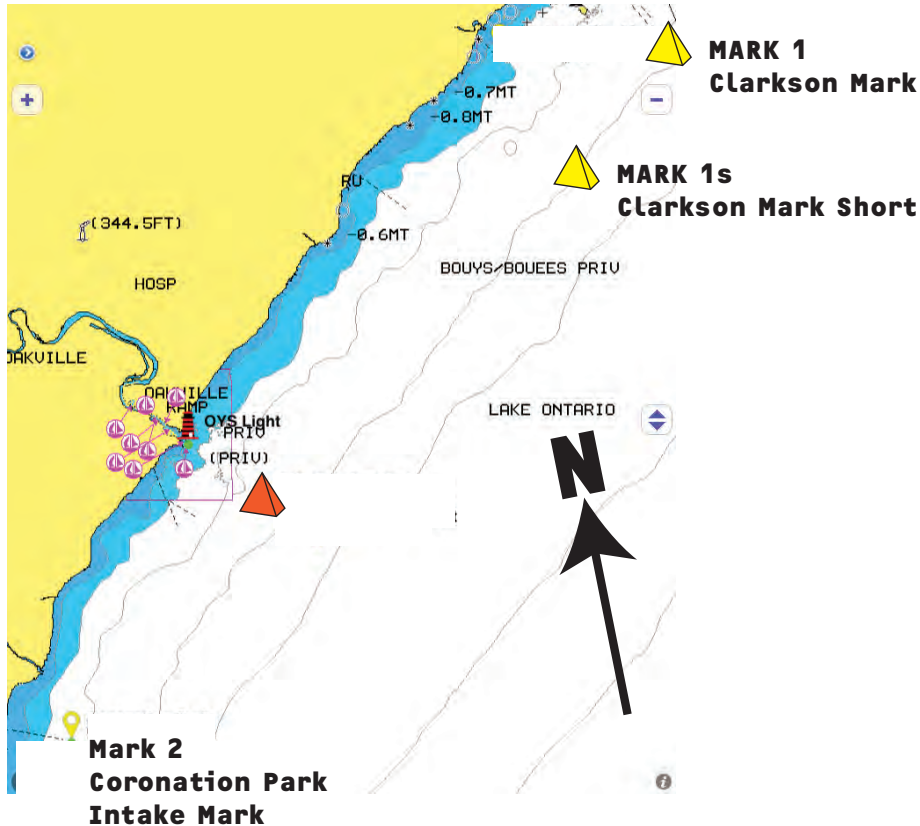


SAILING INSTRUCTIONS ADDENDUM

Bluenose Race - October 12, 2019



THE COURSES - COURSE FLAG FLOWN FROM SIGNAL BOAT



NFS2 & FS2 - START - 1s - 2 - FINISH

NFS1 & FS1 - START - 1 - 2 - FINISH



FS2 & FS2 - START - 2 - 1 - FINISH

NFS1 & FS1 - START - 2 - 1s - FINISH

MARK REFERENCE	DESCRIPTION
Mark 1 Clarkson Mark	YELLOW TETRAHEDRON Located approximately .5nm SW of Clarkson Pier LEAVE TO PORT
Mark 1s Clarkson Short Mark	YELLOW TETRAHEDRON Located approximately .75nm towards start line from Mark 1. LEAVE TO PORT
Mark 2 Coronation Park Intake Mark	WHITE SPECIAL PURPOSE BUOY Located approximately 43°24.544'N 79°40.949W LEAVE TO PORT