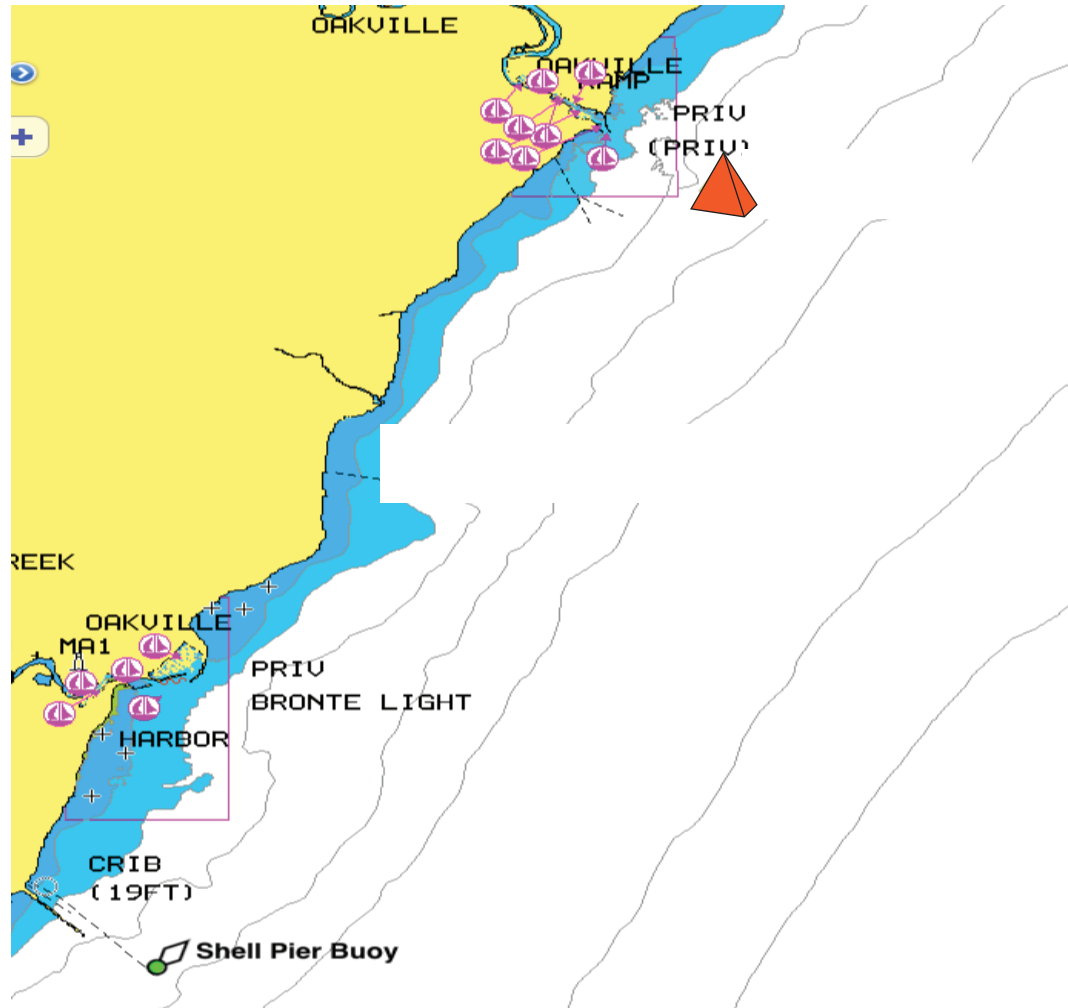


# SAILING INSTRUCTIONS ADDENDUM - October 13, 2018

## BRIEFING 12:00 FIRST WARNING 13:00



### THE START

STARTING LINE IS BETWEEN AN ORANGE TETRAHEDRON AND THE ORANGE FLAG ON THE OYS SIGNAL BOAT.

### BOATS WILL START IN A SINGLE FLEET START

### THE COURSE

START - SHELL PIER BUOY - FINISH  
MARKS LEFT TO PORT

MARK REFERENCE	DESCRIPTION
Shell Pier Buoy	FIXED GOVERNMENT MARK Location approximately <b>43°22.121'N 79°42.369'W</b> <b>LEFT TO PORT</b>