



Oakville Yacht Squadron
97 Forsythe Street, Oakville, Ontario L6K 0A3

OYS Regatta 2018

August 10-12, 2018



Etchells Lake Ontario Championship

and

J27 North American Championship



Note: see separate SI's for PHRF and other One Design classes

SAILING INSTRUCTIONS

The Oakville Yacht Squadron (OYS) is the Organizing Authority for this regatta.

1 RULES

- 1.1 The regatta will be governed by the rules as defined in *The Racing Rules of Sailing*.
- 1.2 The prescriptions of Sail Canada will apply.
- 1.3 Etchells and J27 One Design class rules will apply.
- 1.4 Should there be a conflict between the Notice of Race and the Sailing Instructions, the Sailing Instructions shall apply.

2 NOTICES TO COMPETITORS

Notices to competitors will be posted on the official notice board located inside the OYS Clubhouse.

3 CHANGES TO SAILING INSTRUCTIONS

Any change to the sailing instructions will be posted before 0900 on the day it will take effect, except that any change to the schedule of races will be posted by 2000 on the day before it will take effect.

4 SIGNALS MADE ASHORE

- 4.1 Signals made ashore will be displayed on the official flagpole on the OYS lawn.
- 4.2 When flag "AP" is displayed ashore, "1 minute" is replaced with "not less than 60 minutes" in race signal "AP".

Etchells and J27 Sailing Instructions

- 4.3 When flag “B” is displayed ashore it will indicate notice of pending protest hearings have been posted.

5 SCHEDULE OF RACES

- 5.1 The schedule of racing is as follows:

Date	Warning Signal
Friday, August 10 th	1100
Saturday, August 11 th	1100
Sunday, August 12 th	1000

- 5.2 Competitor’s Meeting will be held in the OYS Clubhouse at 09:30 on Friday 10 August 2018.
5.3 No Warning Signal will be made after 1500 on Sunday, August 12th 2018.
5.4 A maximum of five (5) races per day may be sailed.

6 CLASS FLAGS / START ORDER

Class	Flag	Starting Order
Etchells	Etchells class flag	1
J27	J27 class flag	2

7 RACING AREAS

Attachment A shows the locations of the racing area.

- 7.1 The Alpha Course will be located approximately 1.0 nm on a heading of 85° from the entrance of the Oakville Harbour.

8 THE COURSE

- 8.1 Attachment B shows the courses including the order in which marks are to be passed, and the side on which each mark is to be left.
8.2 The course to be sailed will be indicated by the flying of Flag D for course 1 and Flag E for course 2 without a sound signal before the Preparatory signal.

9 MARKS

- 9.1 The marks of the courses will be as follows:

Start	1	1a	2	3	Finish	Change of Course Mark
Orange inflatable	Yellow inflatable	Yellow inflatable	Yellow inflatable	Yellow inflatable	Orange inflatable	Green inflatable

Etchells and J27 Sailing Instructions

- 9.2 In the event of a change of course after the start, only a new windward mark will be laid. There will **NOT** be a new offset mark (1a).
- 9.3 In the event of a missing mark at a gate, the remaining mark shall be rounded to port.

10 THE START

- 10.1 The starting line will be between the staff displaying an Orange Flag on the signal boat and the start mark.
- 10.2 A boat starting later than 5 minutes after her starting signal will be scored Did Not Start without a hearing. This changes Rule A4.
- 10.3 General Recalls: when a General Recall has been signaled, class(es) shall restart after the final scheduled start in the original start sequence. This changes Rule 29.2.
- 10.4 The Warning Signal for subsequent races will be made as soon as possible after the last boat in each division has finished the previous race.

11 CHANGE OF THE NEXT LEG OF THE COURSE

- 11.1 To change the next leg of the course, the race committee will lay a new mark (or move the finishing line) and remove the original mark as soon as practicable. When in a subsequent change a new mark is replaced, it will be replaced by the original mark.
- 11.2 The course may be shortened at the start / finish line.

12 THE FINISH

- 12.1 The finishing line will be between a staff displaying an orange flag on the signal boat and the finish mark.
- 12.2 If the Race Committee does not plan to run another race, it will fly Code Flag H at the finish.

13 TIME LIMITS AND TARGET TIMES:

- 13.1 The time limit to reach the first mark is 30 minutes.
- 13.2 The time limit for each race will be 2 hours.
- 13.3 Any yacht not finishing within 30 minutes after the first yacht in her division to finish, will be scored DNF without a hearing. This changes rule 35, A4, and A5.
- 13.4 Failure to meet the time limits and target times will not be grounds for redress. This changes rule 62.1(a)

14 PROTEST AND REQUESTS FOR REDRESS:

- 14.1 Protest forms will be available at the Sailing Office. Protests and requests for redress or reopening shall be delivered there within the appropriate time limit.
- 14.2 The protest time limit is 60 minutes after the last boat to finish the final race of the day.
- 14.3 Notices will be posted no later than 30 minutes after the protest time limit to inform competitors of hearings in which they are parties or named as witnesses. Hearings will be held in the protest room in the clubhouse.
- 14.4 RRS 62.2 and 66 are changed to provide that on Sunday, August 12th, requests for redress and request to reopen a hearing must be filed no later than 30 minutes after the time that final results are posted.

Etchells and J27 Sailing Instructions

15 ARBITRATION:

- 15.1 For a protest between two boats alleging a breach of a rule of Part 2 or rule 31 where there has been no damage and no injury, and both parties are in agreement, an arbitration hearing may be held prior to the protest hearing.
- 15.2 Notices will be posted no later than 30 minutes after the protest time limit to inform competitors of hearings in which they are parties or named as witnesses. Hearings will be held in the protest room, in the Club House, beginning at the time posted.
- 15.2 One representative from each boat will appear before an arbitrator.
- 15.3 After hearing testimony from each party, the arbitrator shall reach one of the following conclusions:
 - (a) There was no breach of a rule. If the protestor(s) agrees, the protest is withdrawn and cannot be reopened.
 - (b) There was a breach of a rule. If the offending boat(s) agree, a 40% penalty will be imposed and no further hearing will occur.
 - (c) The matter should go to protest committee for a full hearing.This changes Part 5, Section B of the RRS.

16 SCORING

- 16.1 One (1) race will constitute a series.
- 16.2 When fewer than nine (9) races have been completed, a boat's series score will be the total of her race scores.
- 16.3 When ten (10) or more races have been completed, a boat's series score will be the total of her race scores excluding her worst score.
- 16.4 To request correction of an alleged error in posted race or series results, a boat shall complete a scoring inquiry form available at the protest desk.

17 SAFETY

- 17.1 On the water each competitor must check in (and hail sail number) with the race committee signal boat and ensure that they have been acknowledged before the warning signal of the first start.
- 17.2 Any boat retiring from a race, shall notify the Race Committee as soon as possible.

18 RADIO COMMUNICATION

Competitors with VHF radios are encouraged to monitor:
Alpha Course - Channel 71.

19 PRIZES

- 19.1 Prizes will be awarded for first, second and third place for each fleet.
- 19.2 The J/27 North American Trophy will be awarded to the boat with the lowest series score.
- 19.3 The Etchells Great Lake Championship trophy will be awarded to the boat with lowest series score.

20 LIABILITY

Competitors participate in the regatta entirely at their own risk. See rule 4, Decision to Race. The organizing authority will not accept any liability for material damage or personal injury or death sustained in conjunction with or prior to, during, or after the regatta.

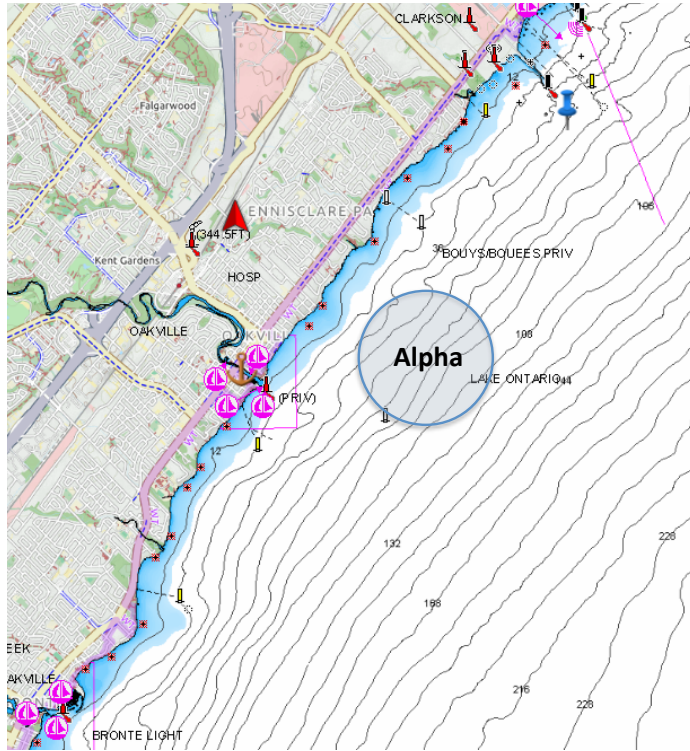
21 INSURANCE

Each participating boat shall be insured with valid third-party liability insurance with a minimum cover of \$2,000,000 for Canadian boats and \$350,000 USD for other countries.

Etchells and J27 Sailing Instructions



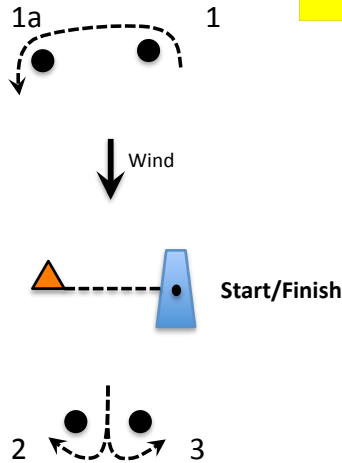
Attachment A Location of Course



Attachment B – Course Diagram

COURSE 1

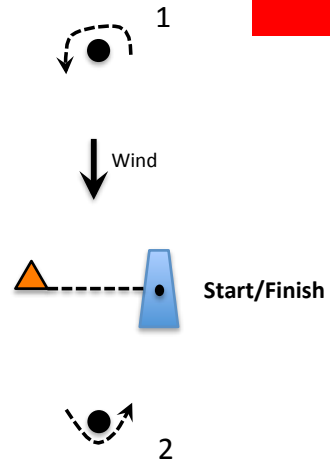
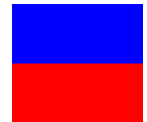
FLAG D



Course: START - 1 - 1a - 2/3 - 1 - 1a - 2/3 - FINISH

COURSE 2

FLAG E



Course: START - 1 - 2 - 1 - 2 - FINISH